

# FLAVON

## COMPENSATION PLAN

## THE BUSINESS CONCEPT OF FLAVON



At Flavon, members get the highest possible commission in return for their efforts. The compensation plan offers exceptional rewards to those who introduce our products to others, who are devoted to promote our business concept, who recruit new members and expand the network.

**The 60% basic commission\*** is available to all active members, you do not need to reach any leadership levels; there are no requirements for side volume or network structure.

In addition, members achieving leadership ranks may also receive a **1-5% leadership bonus**.

**Motivating qualifications and events** help setting both the individual and team goals, step-by-step.

\*base price: 120 euro

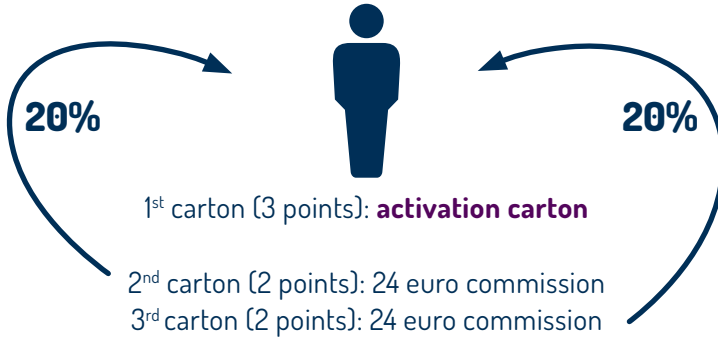


# COMMISSION FOR PERSONAL PURCHASE & QUICK START BONUS

## PURCHASE MORE CARTONS IN THE SAME MONTH

You earn **20% commission** for each carton you purchase in addition to your activation carton.

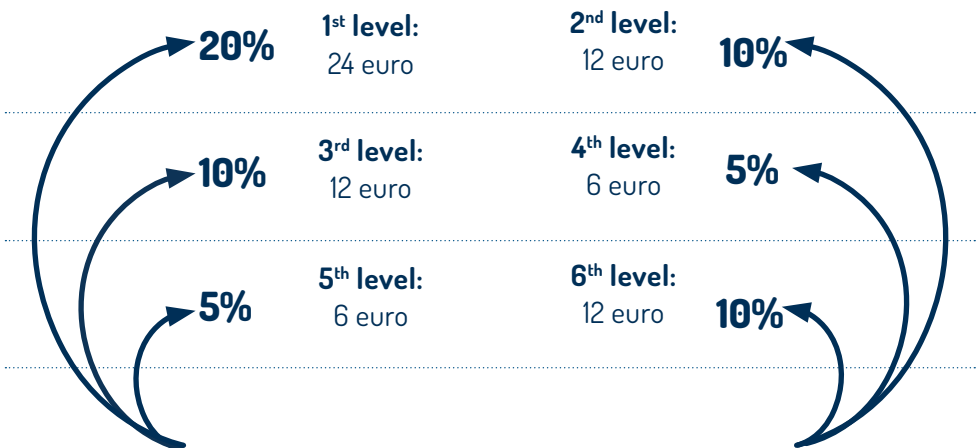
### COMMISSION FOR PERSONAL PURCHASE: 24 euro



## TURN YOUR WORK INTO CASH IMMEDIATELY

The **6 active sponsors** receive **20-10-10-5-5-10% commission** respectively for the activation carton of the new members, in the first two months.

### QUICK START BONUS



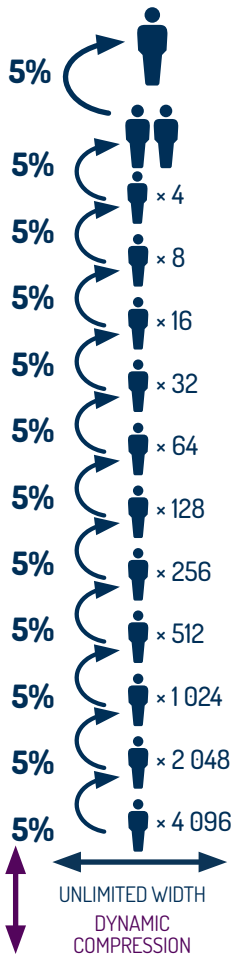
# PASSIVE INCOME

## ACHIEVE FINANCIAL INDEPENDENCE

The 12 active sponsors each earn 5-5% commission

for a member's activation carton, after the member's quick start period is over.

### PASSIVE INCOME: 6 EURO

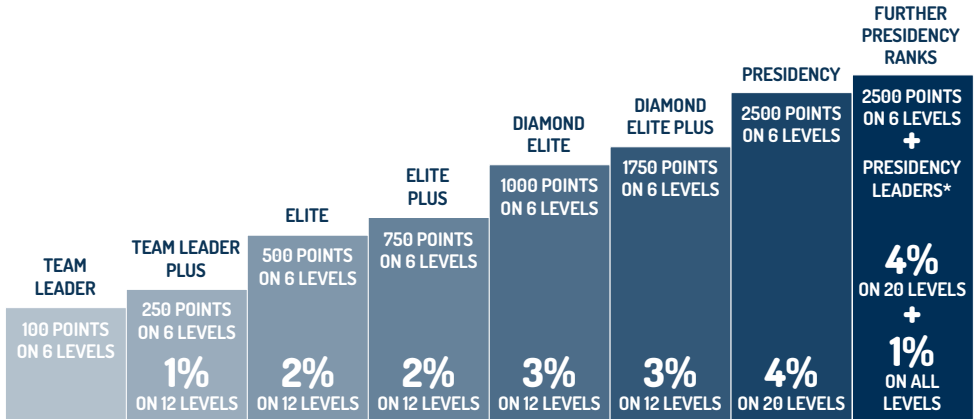


LEVEL	NUMBER OF ACTIVE MEMBERS × COMMISSION	INCOME
1.	2 × 6 €	12 €
2.	4 × 6 €	24 €
3.	8 × 6 €	48 €
4.	16 × 6 €	96 €
5.	32 × 6 €	192 €
6.	64 × 6 €	384 €
7.	128 × 6 €	768 €
8.	256 × 6 €	1 536 €
9.	512 × 6 €	3 072 €
10.	1 024 × 6 €	6 144 €
11.	2 048 × 6 €	12 288 €
12.	4 096 × 6 €	24 576 €
<b>TOTAL</b>	<b>8 190 × 6 €</b>	<b>49 140 €</b>

**Dynamic compression:** only the active levels are taken into account when calculating commission, excluding inactive levels.

# LEADERSHIP LEVELS & BONUSES

## WORK AS A LEADER FOR EXTRA BENEFITS



**Team Leader:** recognition pin

**Team Leader Plus Leader:**  
1% leadership bonus on 12 levels

**Elite Leader:** gold recognition pin and  
2% leadership bonus on 12 levels

**Elite Plus Leader:**  
2% leadership bonus on 12 levels

**Diamond Elite Leader:** gold recognition pin  
with a diamond and 3% leadership bonus on  
12 levels

**Diamond Elite Plus Leader:**  
3% leadership bonus on 12 levels

**Presidency Leader:** gold recognition pin  
with 2 diamonds and 4% leadership bonus  
on 20 levels

**Ruby, Emerald, Sapphire, Platinum Presidency:**  
gold ring with a gemstone, 4% leadership bonus  
on 20 levels and 1% extra bonus on all levels

### Double, Triple, Quadruple, Quintuple Presidency Leader\*:

(2 x/3 x/4 x/5 x 2 500 points on 6 levels)

ornamented vase by Hollóházi Porcelain, with personalized golden engraving,  
and commission according to the Presidency level

The condition of earning leadership bonus is **40 quick start points on 3 active levels** in the month of qualifying for the rank (the condition does not apply to Presidency leaders).

Leadership bonuses are **differential bonuses**. This means that if you have a leader qualifying for leadership bonus in a given month, your commission regarding his/her turnover, will be reduced by the amount of his/her bonus.

\*see our regulations for more information

# RECRUITMENT INCENTIVE PROGRAM

RECRUIT NEW MEMBERS TO YOUR NETWORK  
TO RECEIVE GIFT CARTONS

40 quick start points:

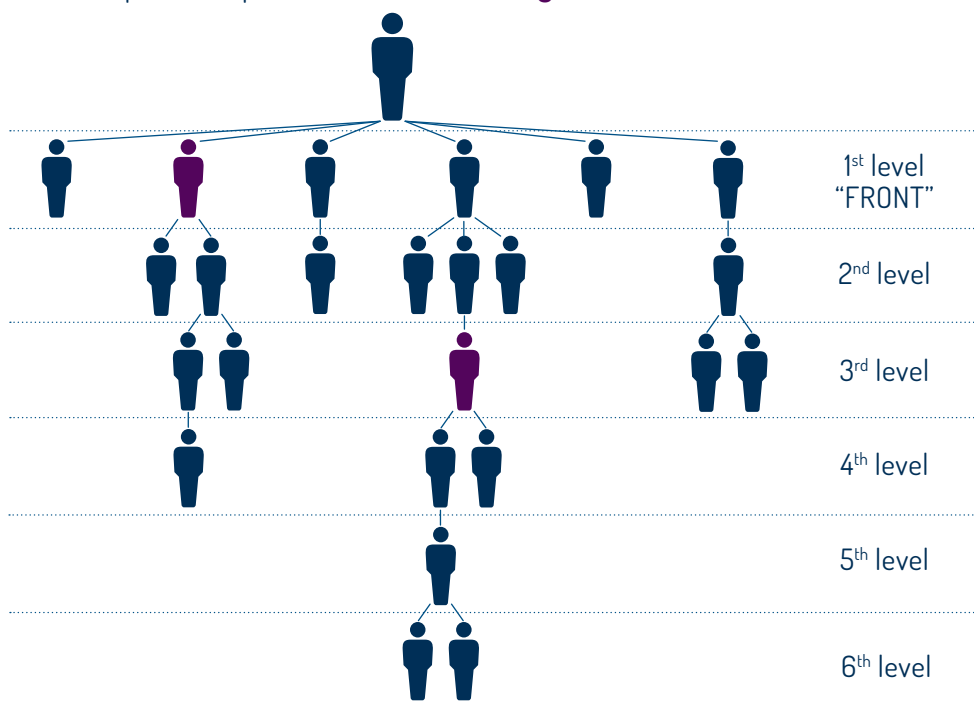
80 quick start points:

120 quick start points:

1 gift carton, worth of 158 euro

2 gift cartons, worth of 316 euro

3 gift cartons, worth of 474 euro



**24 NEW MEMBERS (INCLUDING 2 VIP → 100 POINTS = 462 EURO)**

1<sup>st</sup> level (20 %):  $6 \times 24 \text{ euro} + 7 \times 16 \text{ euro} = 256 \text{ euro}$

2<sup>nd</sup> level (10 %):  $7 \times 12 \text{ euro} = 84 \text{ euro}$

3<sup>rd</sup> level (10 %):  $5 \times 12 \text{ euro} + 7 \times 8 \text{ euro} = 116 \text{ euro}$

4<sup>th</sup> level (5 %):  $3 \times 6 \text{ euro} = 18 \text{ euro}$

5<sup>th</sup> level (5 %):  $1 \times 6 \text{ euro} = 6 \text{ euro}$

6<sup>th</sup> level (10 %):  $2 \times 12 \text{ euro} = 24 \text{ euro}$

**+ 2 GIFT CARTONS (316 EURO) = 820 EURO**

# VIP MEMBERSHIP & LEADERSHIP BUSINESS POSITION (L-POSITION)

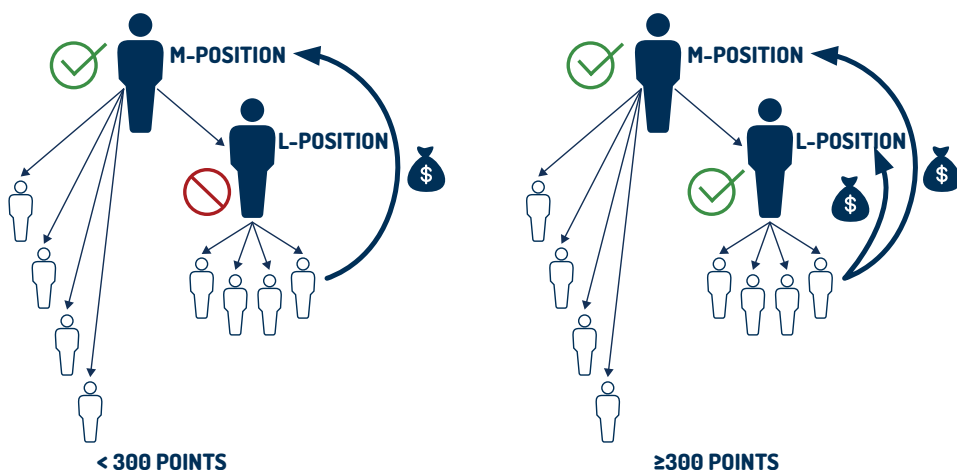
## TAKE ADVANTAGE OF THE CHANCE OF DOUBLE INCOME

By purchasing **8 cartons at the same time**, you automatically become a VIP Member.

The commission for your personal purchase is included in the price, which means that the cost of one carton of Flavon is 137 euros.

As a VIP Member **you receive a second position**, called the Leadership business position (L-position), so you can continue to build your business on two legs at the same time.

The L-position is active only in those months when your turnover on your M-position alone reaches **300 points on 6 levels**, excluding your turnover under your L-position. In this case, both of your positions benefit from the turnover generated under your L-position, so you will earn double commission.



You do not have to and cannot buy activation cartons for the L-position, because when the 300 points are reached, it will be **automatically activated**. In other months, it will be an inactive level and the commission generated under the position will be credited to your M-position only.

*The charts and tables in this brochure are illustrative mathematical models. In reality, the network structure is never built up this way, the actually attainable income depends on the set-up of the network and the members' activity.*



## **CONTACT**

### **DEBRECEN – HEAD OFFICE**

4033 Debrecen, Veres Péter u. 19.

+36 52 520 520

+36 70 455 9000

[info@flavongroup.com](mailto:info@flavongroup.com)

# **Health and Success**

[WWW.FLAVONMAX.COM](http://WWW.FLAVONMAX.COM)